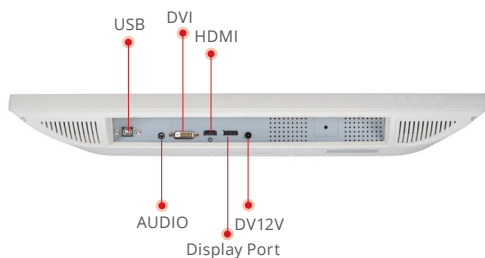
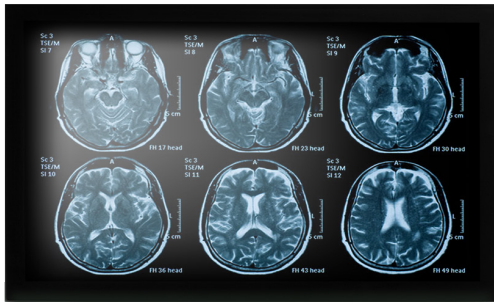


Medica Display for Medical Device

# MEDDP-622

21.5" Slim Medical Display



## Features

- 21.5" LCD Panel with LED Backlight
- Compact and TerseDesign
- DVI x 1, HDMI x 1, DPx1
- True Flat Screen with Capacitive Touch
- Invisible OSD Design
- Speaker -2 x built-in

## Specifications

### DISPLAY

Size	21.5"
Resolution	FHD 1920 x 1080
Max. Colors	16.7M
Brightness (Typ.)	350 nits
Viewing Angle (CR=10)(Typ.)	178°(H)/178°(V)
Contrast Ratio (Typ.)	1000:1
Touch Screen	Projective capacitive touch screen (optional)
Power Requirement	External power adapter, AC IN: 100~240V, DC 12V/5A

### SYSTEM

OS Support	Windows® 10, Windows® 11
------------	--------------------------

### I/O

Input Signal	DVI-D x1, HDMI 1.4 x1, DP 1.2 x1
USB Port	USB 2.0 Type B x1 for Touch Screen
Audio	Line-in x1
Speaker	Built in 2W speaker x2

### MECHANICAL AND ENVIRONMENTAL

Operating Temperature	5°C ~ 40°C(41°F ~ 104°F)
Storage Temperature	-10°C ~ 60°C(14°F ~ 140°F)
Storage Humidity	10%~90%@35°C, non-condensing
VESA	75mm x 75mm, 100mm x 200mm
Dimension (W/H/D)	525.30 x 320.30 x 55.90 mm
Packing Size (W/H/D)	570 x 402 x 196 mm
Gross Weight	6.4kg (14.11lb)
Net Weight	4.6kg (10.14lb)
Certifications	CE: EN 60601-1-2:2015 + A1:2021 (V4.1), EN 60601-1:2007/A1:2013/A2:2021 (V3.2) FCC: Part 18 Subpart C

## Ordering Information

- **MEDDP-622HNN-A1-1010**  
21.5" LCD Monitor.350 nits,DVI-Dx1.HDMIx1.DPx1.DC 12V Adapter
- **MEDDP-622HPN-A1-1010**  
21.5" LCD Monitor.350 nits, P-CAP Touch,DVI-Dx1.HDMIx1.DPx1.DC 12V Adapter
- **MEDDP-622TND-A1-1010**  
21.5" LCD Monitor.350 nits,DVI-Dx1.HDMIx1.DPx1.DC 12V Adapter, DICOM
- **MEDDP-622TPD-A1-1010**  
21.5" LCD Monitor.350 nits, P-CAP Touch, DVI-Dx1.HDMIx1.DPx1.DC 12V Adapter, DICOM