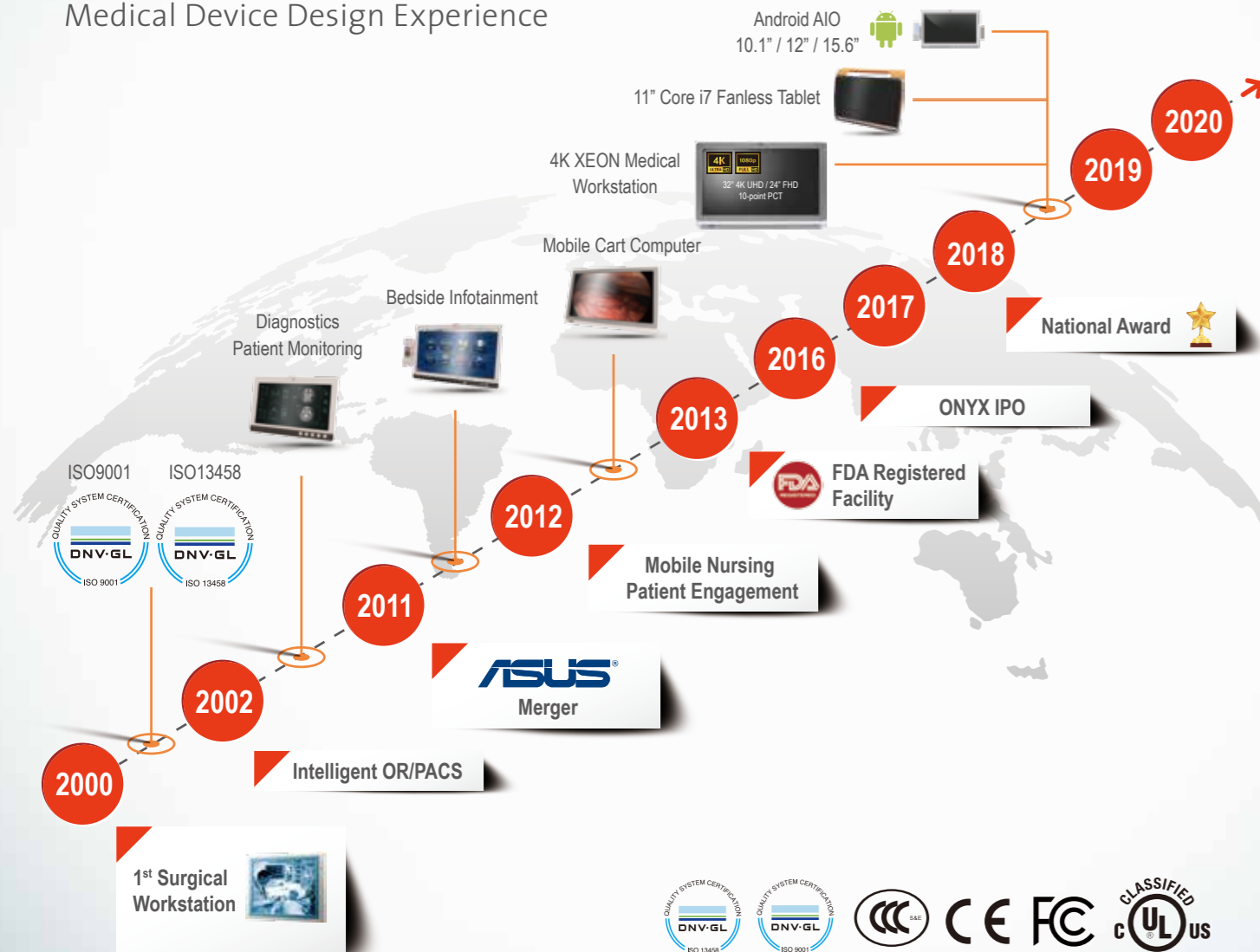


About Onyx

Onyx Healthcare Inc. is a professional medical IT company providing trusted, innovative products, customer-centric design services and medical PC solutions. Onyx cooperates closely with our partners to provide comprehensive medical products such as Smart View Medical Stations, Fanless Slim Panel PC, Medical Display, Healthcare Infotainment, Mobile Tablet PC, Medical PC and Mobile Computing Cart in the professional Hospital / Clinical IT market. Our products offer the advantages of filmless and paperless interaction in the hospital environment and all product solutions guarantee reliable quality (EN-60601-1 and UL-60601-1).

20+ years

Medical Device Design Experience



France C.A.I.H. Selection

In 2019, after a European public tender process, the CAIH committee chose the Onyx Venus AIO mobile workstations with hot swappable battery technology for mobile ePR applications. The Venus systems will be used by 1300 public hospitals in France for the next 4 years.

Trusted by UK National Health Service

With over 5000 units deployed across the NHS, the Onyx Venus range of mobile cart computers has revolutionized point of care information access in UK hospitals.



Specifications

Model	VENUS-243	VENUS-223	VENUS-223-AMD	VENUS-222
Processor	Intel® Skylake Dual-Core i5 / i7		AMD Ryzen® V1202B / V1605B	Intel® Celeron® J1900
System Memory	DDR4 up to 32GB		DDR4 up to 32GB	DDR3L up to 8GB
OS support	Microsoft® Windows 7/8.1/10, Ubuntu 18.04 LTS, IGEL (thin client solution)		Windows 10, Ubuntu 18.04 LTS, IGEL	Microsoft® Windows 7/8.1/10
Security	TPM2.0 (Trusted Platform Module), Smart card reader, RFID ISO 15693/14443A (optional)		TPM2.0 (Trusted Platform Module), Smart card reader, RFID (optional)	TPM1.2, Smart card reader, RFID (optional)
Wireless	802.11 ac/a/b/g/n + BT(optional)			
Display	23.8" panel	22" panel	22" panel	22" panel
Resolution	1920 x 1080		1920 x 1080	1920 x 1080
Brightness	250nits		250nits	250nits
I/O	Side I/O: USB 3.0 x 2, Rear I/O: USB 3.0 x 2, USB 2.0 x 2, HDMI x 1, COM x 1, Combo Audio x1, Kensington slot, Gigabit LAN x1, 24V DC-in x1		Side I/O: USB 3.0 x 2, Rear I/O: USB 3.0 x 2, USB 2.0 x 2, HDMI x 1, COM x 2 (isolated optional), Combo Audio x1, Kensington slot, Gigabit LAN x2, 24V 2.5mm DC-in x1	Side I/O: USB 3.0 x 2, Rear I/O: USB 3.0 x 2, USB 2.0 x 2, USB x 1, DP x 1, Isolated COM x 1, Mic-in x 1, Audio-out x 1, Gigabit LAN x1, 24V DC-in x1
Dimension	607(L) x 78(W) x 404(H) mm	542(L) x 78(W) x 362(H) mm	542(L) x 78(W) x 362(H) mm	542(L) x 78(W) x 362(H) mm
Net Weight	8kg (17.6lbs)	7kg (15.4lbs)	7kg (15.4lbs)	7kg (15.4lbs)

Model	VENUS-193	VENUS-173	VENUS-153	VENUS-123
Processor	Intel® Skylake Dual-Core i5 / i7 / Celeron 3955U	Intel® Skylake Dual-Core i5	Intel® Skylake Dual-Core i5 / Celeron 3955U	
System Memory	DDR4 up to 32GB	DDR4 up to 16GB	DDR4 up to 16GB	
OS support	Microsoft® Windows 7/8.1/10, Ubuntu 18.04 LTS, IGEL (thin client solution)	Microsoft® Windows 7/8.1/10, Ubuntu 18.04 LTS, IGEL (thin client solution)		
Security	TPM2.0, Smart Card Reader, RFID ISO 15693 / 14443A (optional)	TPM2.0, RFID ISO 15693 / 14443A (optional)		
Wireless	802.11 ac/a/b/g/n + BT 4.0 (optional)		802.11 ac/a/b/g/n + BT (optional)	
Display	19" panel	17" panel	15.6" panel	11.6" panel
Resolution	1280 x 1024	1280 x 1024	1920 x 1080	1366 x 768
Brightness	250nits		220nits	250nits
I/O	Rear I/O: USB 3.0 x 2, USB 2.0 x 2, Side I/O: USB 3.0 x 2, HDMI 1.4 x 1, COM x 2, Combo Audio x1, Gigabit LAN x2, 24V DC-in x1	USB 3.0 x 2, USB 2.0 x 2, HDMI 1.4 x 1, COM x 1, Gigabit LAN x2, 12V DC-in x1	USB 3.0 x 2, USB 2.0 x 2, COM x 1, Gigabit LAN x2, 12V DC-in x1	USB 3.0 x 2, USB 2.0 x 2, COM x 1, Gigabit LAN x2, 12V DC-in x1
Dimension	429(L) x 78(W) x 384(H) mm	384(L) x 68(W) x 345(H) mm	392(L) x 43(W) x 265(H) mm	300(L) x 43(W) x 205(H) mm
Net Weight	5.5kg (12.13lbs)	4.5kg	2.7kg	1.9kg

Contact Information

Onyx Healthcare Inc.

2F., No. 135, Lane 235, Pao Chiao Rd., Xindian Dist., New Taipei City 231, Taiwan (R.O.C.)
Tel: 886-2-8919-2188
Fax: 886-2-8919-1699
E-mail: sales@onyx-healthcare.com

Onyx Healthcare EUROPE B.V.

Ekkersrijt 4002, 5692 DA Son, The Netherlands
Tel: +31-(0)499-745600
E-mail: eusales@onyx-healthcare.com

ONYX Healthcare USA, Inc.

CA Office: 324 W. Bluebridge Ave., Orange, CA 92865 NJ Office: 3 Crown Plaza, Hazlet, NJ 07730
Tel: +1-714-792-0774
Fax: +1-714-792-0481
E-mail: usasales@onyx-healthcare.com



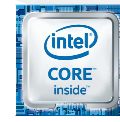
Optimize Mobile Medical Use with Uninterruptible Power



12"-24" Mobile Computer

www.onyx-healthcare.com

Powerful performance for various medical applications



Powerful computing performance

The Venus series supports 6th Generation Intel® Core™ i5/i7 processors, providing excellent performance for multi-tasking.



Latest medical safety and EMC regulatory

Venus series complies with the latest medical safety and EMC regulatory : IEC / EN60601, IEC / EN60601-1-2 and UL60601-1. COM and LAN ports with isolation protection can be connected to other medical devices safely for different medical applications.



Uninterruptible power



Venus's hot-swappable battery design with dual medical-grade batteries provides 24/7 uninterruptible power by swapping batteries while avoiding problems with power cable management.

A variety of battery packs are available for the Venus (STD/XL/XXL for 19"/22"/24") and miniVenus (mini battery)



Telemedicine Workstation



75/100mm standard VESA mount

The standard VESA mount design is suitable for all kinds of medical carts and various usage scenarios.



Rich Connectivity

A variety of I/O parts allow extending remote clinical services with patients at home to increase the frequency of healthcare visits via telemedicine.

Upower Pro

UPower Pro offers extra backup battery power and charging functionality.



Safer Medical Environments



Anti-bacterial

Venus series complies with the latest medical safety and EMC regulatory : IEC / EN60601, IEC / EN60601-1-2 and UL60601-1. COM and LAN ports with isolation protection can be connected to other medical devices safely for different medical applications.



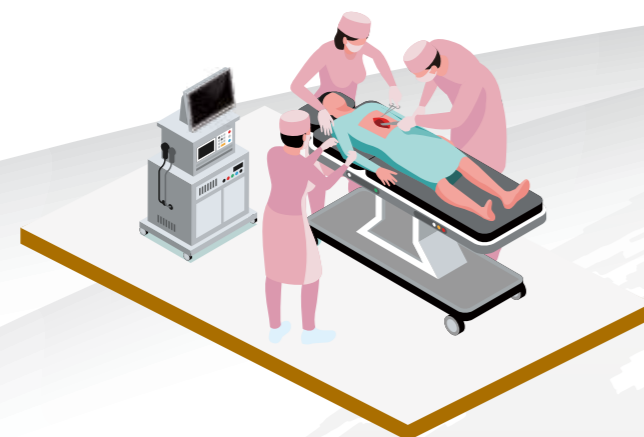
Sterilization

Venus with waterproof IP65(front) and fanless design allows frequent cleaning which is important for keeping healthcare environment sterilized.

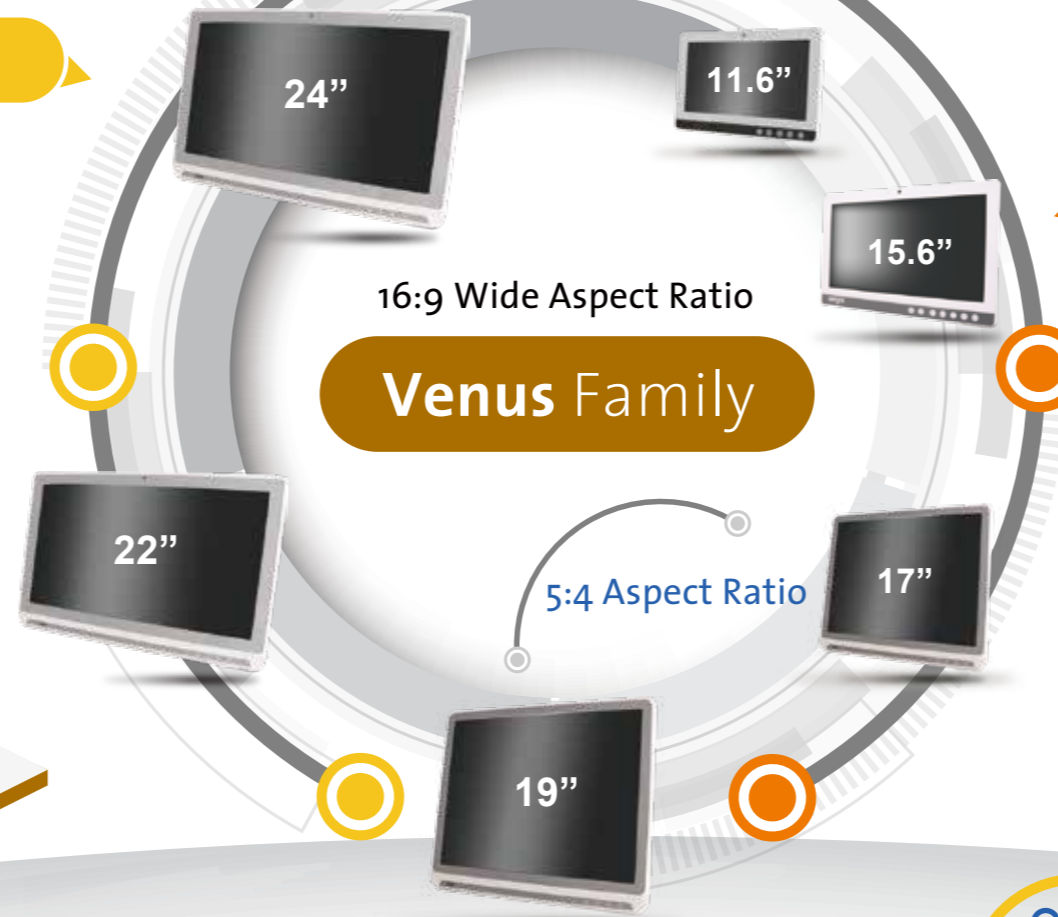


Detergent Compatibility

VENUS is approved for use with Clorox Healthcare® products, which is an important advancement in safeguarding patient environments.



VENUS



Mini VENUS

Best IT Management & Security



ORION

Remote update / installation

> Support system software/firmware remote installation and update

Group settings

> Customized device setting by group for better management

Battery diagnostics

> Monitor all batteries with diagnostic tools with customized user alert settings



Security

Smart card reader
RFID ISO 15693 / 14443A
TPM 2.0 (Trusted Platform Module)



Intel® AI Accelerator



The Intel® Movidius™ Myriad™ X is a low-power high-performance VPU capable of a wide range of AI applications and is capable of processing speeds up to 105fps (80 typical) and 1 TOPS as a dedicated neural network accelerator. The Intel® Movidius™ Myriad™ X is compatible with Intel® distribution as OpenVINO toolkit, making it easy to setup and run AI inference software.

